



"I feel that dollar for dollar the FaxCore® fax server is the best purchase we have ever made. The results are seen in the bottom-line every day." – Don Myers, IT Manager

With globalization, increased competition, changing regulations and new market opportunities, you need to acquire IT systems that provide a payback like that.

Success in this information age is having the right technology at the right time. To differentiate and compete, businesses need low-risk, high return information technology solutions. Success is dependent on communicating with your customers and suppliers the most efficient and secure way possible, and fax is still the preferred method for businesses around the world.

FaxCore® is the next generation fax server build natively on the Microsoft .NET platform, which provides a secure, manageable, flexible and efficient way to fax while leveraging internet technologies such as the web and e-mail.



AWARD WINNING FAX SERVER SOLUTION

A high-performance engine designed to track document, manage and deliver fax traffic over enterprise networks of any size.

WWW.TMCNET.COM

Key differentiators that set FaxCore® apart from other fax server solutions

.NET DESIGN

FaxCore's® .NET SDK has a well-defined SOAP interface make the fax services available via XML to any enterprise platform (Linux, MAC, Unix, Windows). Redesigned from ground up on Microsoft .NET 2.0 and IIS 6.0 architecture.

INHERITED USER PERMISSIONS

The domain model in FaxCore® enables the propagation of inherited user and system properties within Organizational Units or Child Domains, which simplifies the administration of system cover pages, addresses, etc.

BROWSER INTERFACE FOR USERS AND ADMINISTRATORS.

By leveraging ASP.NET Web Controls, the rich functionality normally associated with a Fat Client are available to both Users and Administrators through Microsoft's Internet Explorer. Enhanced A.J.A.X. (Asynchronous JavaScript and XML) feature.

INTEGRATION WITH MICROSOFT OUTLOOK

Send faxes from Outlook by sending an email to the Business Fax address of a Contact or using a one off address, and optionally add a FaxCore folder in Outlook for real time monitoring of faxes.

BEYOND FAXING

FaxCore's® Mixed Mode Messaging allows users to send documents messages via fax, email, HTTP and FTP. With the FaxCore® MFP Connector, users can get authenticated logins at the MFP to fax paper documents and then archive the fax in FaxCore. FaxCore's Multi-Lingual feature allow users to have a localized language preference (double byte characters).

N-TIER ARCHITECTURE

The low level design of FaxCore® allows for scalability and fault tolerance with distributed processing. Legacy computer fax products are client-dependant first generation, while client/server products are second generation. FaxCore® is a latest generation solution and the only one that conforms to the N-Tier and web service paradigm.

ENTERPRISE DIRECTORY STRUCTURE

The domain-based user model in FaxCore® is a true enterprise directory structure. This enables FaxCore® to mirror AD and NDS enterprise directory structures unlike other fax products that have a flat domain model.

SECURITY AND BETTER MONITORING

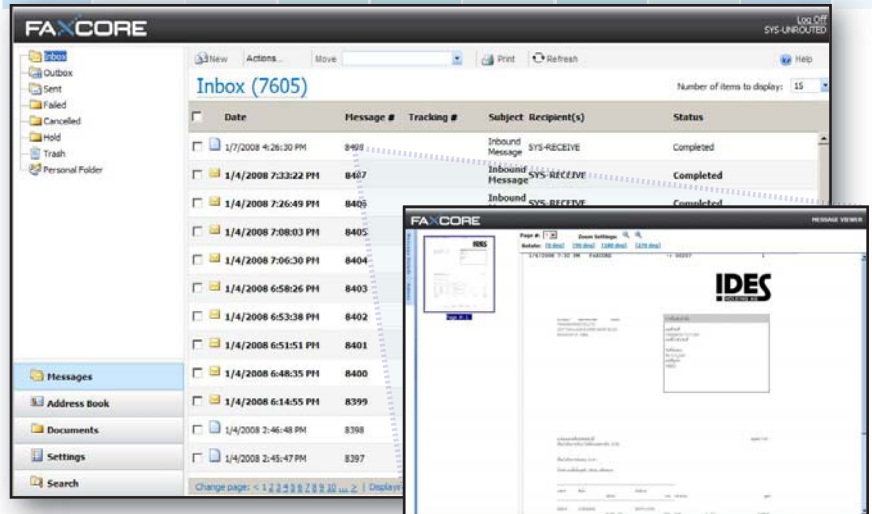
Enhanced security design at the user level, dealing with permissions related to sending messages and a manager fax approval restriction. Superior audit trails enabling managers to audit and supervise all actions.

The User Experience

FaxCore's® thin client interface delivers all the features normally only found in a fat client. The full featured UI allows users to select cover pages, initiate fax and/or email transmissions.

Users can view all fax transmission details and informative statistics. Additional reporting modules with the most extensive variety of search criteria ever offered, is made available to the user in an intuitive format.

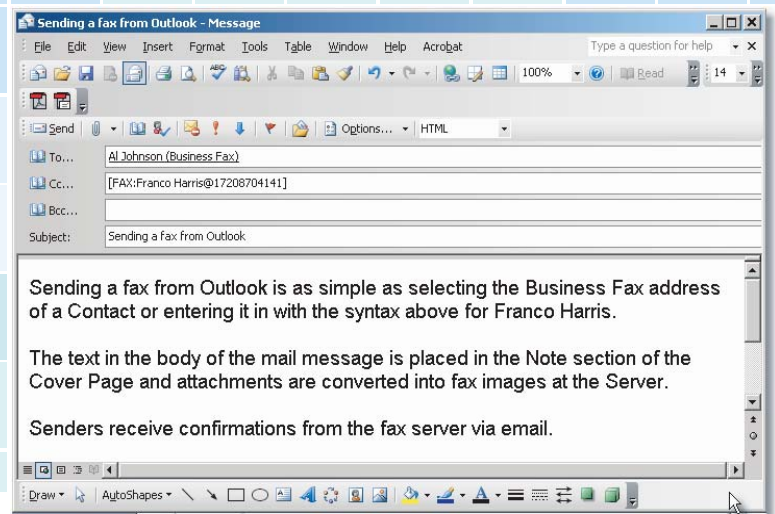
Received faxes can be viewed in a browser. The faxes can be printed, forwarded to email and fax address or saved as PDF files.



Email Integration: FaxCore's® Exchange Connector allows Microsoft Outlook users to use the "Business Fax" address of a Contact, or enter a one off "FAX" address in the To field using the following syntax; [FAX: Franco Harris@1-720-870-4141], then attach the file to be sent. Any text entered into the body of the email message will be placed in the Note section of the Cover page.



Add a folder to the Outlook client and set the Home Page of that folder to the URL of the FaxCore® Server and users can monitor outbound faxes, view received and sent faxes as well as send faxes using the FaxCore® Send interface.



FaxCore® Appliance Server

FaxCore's® Appliance Server comes with the fax hardware and software preinstalled and configured. The appliance arrives ready to be plugged into an existing network and so you can begin working almost immediately, with little configuration. It is designed to Operate run with little or no support. IT managers need not worry about hardware compatibility and sourcing different vendors.

A single call to FaxCore® for all your fax server questions is what the appliance offers. It includes Windows Server 2003 Embedded, FaxCore® and the appropriate Brooktrout fax board or Fax over IP drivers for a pure software only fax solution.

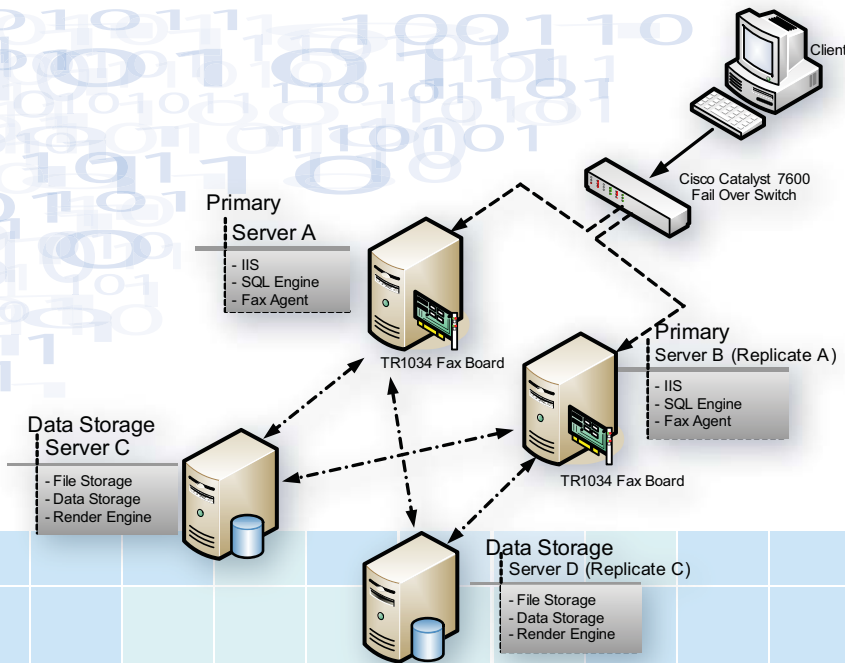
2U Rack Mount Appliance



Mini Appliance



Fault Tolerant and Scalable without Expensive Clustering



FaxCore® is architected with the same web services design that popular on-line retailers use to provide scalable and fault tolerant Internet based services.

FaxCore's® architecture enables organizations to duplicate and spread critical system processes across multiple PCs. For example, rather than putting all fax boards into a single server, spread them out over multiple PCs, each containing 50%, 25%, 20%, etc. of the fax boards and PSTN connections, thus eliminating single points of failure. This same concept can be applied to all of the critical fax server functions: Rendering, Document Storage, Presentation Services, and Event Processing.

Integration Overview

FA·CORE®

FaxCore® offers a variety of integration points and connectors that enable integration with virtually any back office application, LDAP compliant directory, host application, and other custom applications. FaxCore® integration includes the following areas:

FaxCore® Email Gateway – provides email to fax functionality via direct sending to the FaxCore® SMTP server, or through integration with Exchange, Lotus Notes, and other mail servers.

FaxCore® File Gateways – provides a simple architecture for initiating faxes through FaxCore® by dropping files into directories. Supports PCL, embedded codes, and other file formats.

FaxCore® notification templates – allows administrators to easily create templates for delivering fax status notifications to any 3rd party application via HTTP, FTP, Email, Fax, or Web Service invocation.

External User Authentication – allows FaxCore® user passwords to be authenticated via external directory services, security providers, and other applications.

Directory Synchronization – synchronizes FaxCore® users with users defined in 3rd Party directories. Allows administrators to quickly and easily add and maintain FaxCore® users and permissions via their existing directories and databases.

FaxCore® SDK

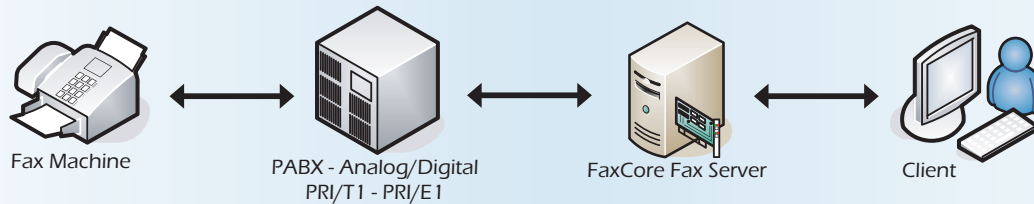
FaxCore® provides a rich set of APIs that expose the full set of features in the FaxCore® Server. The following programming APIs are included:

- Web Service API via XML over HTTP and HTTPS

Additionally, FaxCore® is completely customizable via standard HTML style sheets (css) and custom company logos and images, allowing private labeling of the FaxCore® server.

Receiving and Routing faxes—more options with FaxCore®

Receiving a fax is easy. Determining who the fax belongs to is the challenge. FaxCore® supports the following routing methods.



DID — Direct Inward Dial service for analog DID lines.

DNIS — Dialed Number Identification Service for digital T1, PRI/T1 and E1 circuits.

DTMF — Dual Tone Multi-Frequency for analog fax boards.

CSI — Called Subscriber Identification is data traded by fax devices.

Line Routing — records which line the fax was received on.

Caller ID — available with digital fax circuits.

Barcode data — when present can be read by FaxCore and used to assign ownership of a fax.

BARCODE Routing explained

FaxCore® offers a new way to automatically route faxes to the proper recipient through the use of bar code recognition. Implementing Bar Code Routing is far less costly than the monthly cost of providing every person their own unique fax number. For example, it can cost \$5,000/year for 200 DID fax numbers on four DID lines. The FaxCore® barcode module is half that cost and it's a one time cost.

The vast majority of legitimate faxes are sent and received by people and companies who have an established relationship. Just as we exchange phone, fax and email addresses, individuals can distribute their own unique barcode that contains their User ID.

The key to making barcode routing successful is to distribute the barcodes to the people who send the faxes. Barcodes can be put on survey forms, RMAs, Customer Support Requests, contracts, Order Confirmations, etc.



Sample BarCode

Barcodes can be placed on forms that are distributed and designed to be filled out and faxed back in. FaxCore® scans every page of a received fax, looking for a barcode. Once the barcode is read the data extracted is compared to a list of Routing Rules for determining ownership of the fax. Once ownership is established, a notification event occurs.

Minimum Requirement

- Windows Server 2003 Standard or Web Edition
- Pentium Processor 1.8GHz or higher
- 1 GB RAM
- 100 GB Hard Drive
- Brooktrout Fax Board

Email Integration

- Microsoft Exchange 5.5, 2000, 2003 & 2007
- Lotus Notes
- Group Wise
- SMTP Compliant mail system

Hardware Devices

- HP Digital Sender
- Xerox Document Center
- Fuji Xerox ApeosPort
- Sharp OSA MFP

Applications

- Liberty IMS
- eCopy™ShareScan®
- eCopy™Desktop™
- SAP : SAP Connect
- Citrix
- Cardiff Teleform
- StreamServe
- Microsoft SharePoint 2003 & Office SharePoint Server

CONTACT US:

FaxCore Inc. (HQ)
19590 East Main Street
Suite 207
Parker, Colorado 80138
USA.
Tel: +1 (720) 870 2900
Fax: +1 (720) 870 4141
Email: sales@faxcore.com
URL: WWW.FAXCORE.COM

FaxCore (Asia) Sdn Bhd (AP)
1st Floor, No. 26-1
Lorong Batu Nilam 3C
Bandar Bukit Tinggi Klang
41200 Klang
Selangor, Malaysia.
Tel: +6 (03) 3324 3226
Fax: +6 (03) 3324 9226
Email: sales@faxcore.com.my
URL: WWW.FAXCORE.COM.MY

