

**"Highest Performance  
Lowest Price"**

**Microsoft**  
**GOLD CERTIFIED**  
Partner

# **GFI** WHITE PAPER

## **Integrated network faxing key to improved productivity and information security**

### **Network faxing reduces labor costs and increases information security**

With an integrated network faxing solution, you can save thousands of dollars in labor costs alone and improve your productivity. At the same time your faxes can be readily prepared, more professional in appearance and add an air of professionalism to your organization's business communications. By leveraging existing word processing and messaging applications, you can expand your use of these applications at no additional software or training costs. Higher productivity and lower costs sound like attractive options? Read this white paper for more info!



### **Sign up to GFI's FREE SMB-Zone Newsletter**

Receive FREE invites to SMB focused content such as IT Advice, Topical White Papers, MVP Tips and Tricks, Webcasts and much more!



# Integrated network faxing key to improved productivity and information security

## Introduction

This white paper describes the benefits of network integrated faxing in business communications and the resulting more cost-effective and efficient form of fax system when compared to traditional fax machines and email. It also explains why integrated network faxing is the best approach to take when dealing with issues of security, compliance with privacy regulations, reducing overhead and increasing productivity, all at no real cost. While ordinary fax machines and email messaging will remain important, they cannot match the benefits that integrated network faxing brings to the fax needs of an enterprise.

- Introduction..... 2
- The state of the fax..... 2
- Problems with email messaging ..... 2
- Problems with manual faxing ..... 3
- Why integrated network faxing is the answer ..... 5
- Summary..... 7
- About GFI FAXmaker for Exchange/SMTP ..... 8
- About GFI..... 8

## The state of the fax

It wasn't that long ago that faxes seemed to be destined to go the way of the dinosaur and the dodo bird. Faxes, the transmission of paper documents by electronic means in the twinkling of an eye, were an exceptional technology for their time, said the pundits. However, they continued, the growing ubiquitous email systems would soon make them passé, or at best reduce faxes to a small niche where email couldn't yet match the capabilities of a fax machine.

As so often happens, the pundits and doomsayers were wrong. Faxing didn't go away and continues to be an important means of business communication. In fact, email didn't really ever come close to supplanting faxes, and fax technology, it turns out, may be a better solution in an increasing number of situations.

## Problems with email messaging

It was once thought that standalone fax machines would be replaced with email messaging which, in many instances, allows documents to be sent as attachments and be printed locally, losing little of their integrity.

But, unless the right safeguards are deployed everywhere all the time, email quickly showed it was not as up to the task as hoped because it could not always guarantee to be as a secure form of communication as faxing (for example an email message and its content might be stored on any number of servers). Email transmission of information also runs into problems with compliance agencies and regulations, such as HIPAA, that require greater security.

# **GFI** Integrated network faxing key to improved productivity and information security

Besides, unlike emails, a fax can't carry a virus; a fax can't be used to phish; and a fax can't be used to harm your company's network security.

It is estimated that there are about 120 million fax machines in use in the world today, and close to 6 million new purchases each year. One of the reasons that fax machines have continued to be around is that they are simple to use and an easy way to receive documents quickly, safely and securely. While there are no exact numbers on it, many if not most, companies worldwide still continue to rely on traditional manual faxing from a dedicated fax machine. While this might be acceptable in a small office or where the ability to receive or send faxes is sporadic, sending faxes manually is clearly out of date, and costing you money.

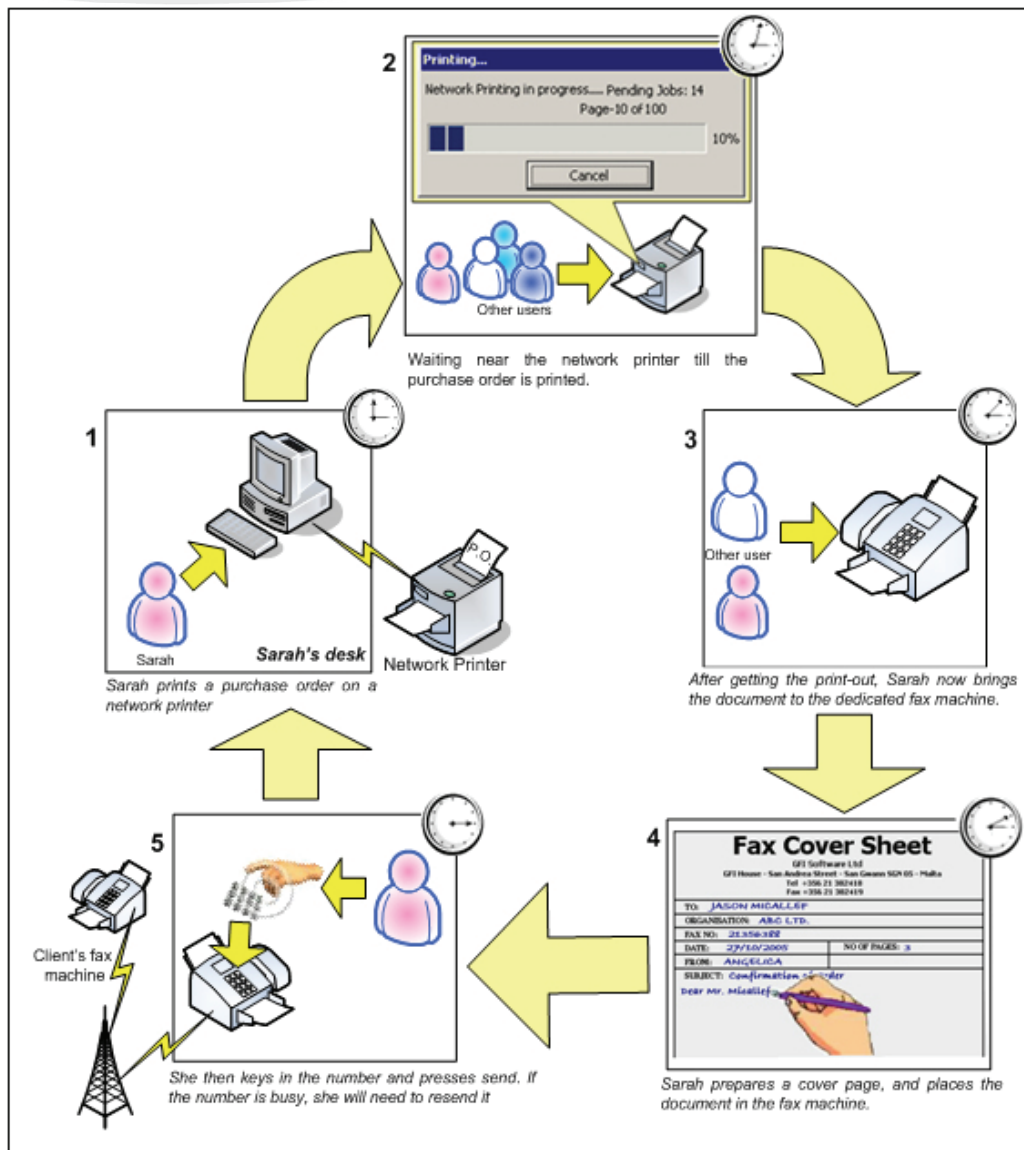
## **Problems with manual faxing**

One of the biggest problems with manual faxing is the time it takes to send one – time that could be put to better use elsewhere.

Let's look at the steps in sending off a fax manually. A process we'll call the "Where's Sarah" scenario. (Think of how many times you've asked "Where's Sarah" and the answer comes back "She's sending a fax.") We'll assume that the fax document, for example a purchase order, has already been prepared on Sarah's workstation and needs to be faxed to a vendor. How does it get there?

- 1 Sarah prints the purchase order on a network printer
- 2 Sarah gets up from desk and walks to the network printer where she finds the printed document either alone or in a pile of other print jobs
- 3 Sarah now brings the document to the dedicated fax machine
- 4 Sarah prepares a cover page, and places it, along with the purchase order in the fax machine
- 5 She then keys in the phone number of the receiving fax machine and presses send. If the number is busy, she may need to resend it
- 6 Once done Sarah returns to her desk.

# GFI Integrated network faxing key to improved productivity and information security



A conservative estimate is that the entire process, assuming no other distractions and no significant delays due to missing paper, jams, machine errors, getting a drink at the water dispenser or talking to co-workers, takes about ten minutes.

That's right – about ten minutes (or more) to send a fairly ordinary, undramatic document. What's more, the document will likely be received in poor quality (90% of all faxes are sent in standard mode) with gray scales reduced to black, the document probably tilted slightly (or worse) and the whole end result being terribly unprofessional looking.

What happens to the fax at the receiver's end can be even less pleasant. Assuming it arrives at a communal fax machine, the chances of it becoming lost or misrouted increase with each passing moment. It's easy to imagine it being picked up as part of another's person fax and misfiled; or placed to the side then slipping to the floor or into a waste paper basket. Or, it might be misdirected to an entirely wrong department where it will languish,

# **GFI** Integrated network faxing key to improved productivity and information security

waiting for someone to come and retrieve it, which might never happen and as you would expect, confidentiality is problematic.

Suddenly, one of a fax's great advantages, timeliness, is lost. You've wasted time (and therefore money); sent a not very attractive document, which, if it avoids becoming part of the paper pileup around the fax machine and is actually delivered to the recipient is of such poor quality that it makes your company look like it's stuck in the past, using antiquated technology, and, at that, not very effectively either.

## **Why integrated network faxing is the answer**

So what is the solution to business communications? Email can be insecure and risky – plus it has a number of intrinsic problems of its own. Faxes solve many of these issues, but manual faxing is out of date and the problems it creates make it far less than ideal.

### **What is needed**

In addition to security, the ideal method to finding a solution better than either manual faxing or emailing should also include the following on its wish list:

- Reduces fax associated costs
- Improves worker productivity
- Easy installation and deployment
- Leverage existing email and office suites
- Requires no change to the user's routine
- Archives faxes for later retrieval and record retention.

The most popular solution has been to replace standalone fax machines with integrated network fax servers that allow users to quickly and easily send, receive and manage fax communication right at their desktop.

In this type of a solution, users can compose faxes in their word processor (or another application) or create a new message in their email client (e.g. Outlook or Lotus Notes). Numbers can be selected from the mail clients' address list or entered manually. Traffic is managed through the Exchange/SMTP mail server which can receive and route faxes.

Top of the line integrated network fax servers also allow users to send and receive faxes via their handhelds or mobile devices like Blackberry and Pocket PC 2003. With industry studies, such as that by UK-based Canalys, showing the doubling in overall sales of Smartphones and PDA/Phone hybrids, mobility is on the rise. Furthermore, the ability to receive information anywhere, especially faxes, is about to be, if not already, mission critical.

### **Saving money**

One of the key benefits to integrated network faxing is the cost saving it provides. As we explained above, a single fax can take up to ten minutes to send. If the person responsible for sending the fax is paid a modest \$12 an hour (\$25,000 per year) then the manpower costs alone of sending one fax is \$2 per fax. Multiply that by the

# **GFI** Integrated network faxing key to improved productivity and information security

number of faxes sent per day, per month or year and the labor costs could climb into thousands of dollars very quickly as shown in Table 1.

Faxes per day:	Daily cost	Weekly cost	Annual cost
10	\$20	\$100	\$5,200
25	\$50	\$250	\$13,000
50	\$100	\$500	\$26,000
100	\$200	\$1,000	\$52,000

*Table 1 – Costs incurred when sending faxes manually*

These costs are actually low since they do not include other items such as paper, long distance charges or maintenance costs (such as toner cartridges).

Let's assume that Sarah works in a company with an integrated network fax solution. Now when she completes the to-be-faxed document, she doesn't have to leave her desk, all she has to do is:

- 1 From the word processor, print to the fax application
- 2 Select the recipient from the address book or enter the phone number
- 3 Click send (the fax will continue to be resent without user intervention).

Total time? Not more than one minute – using the same figures, the cost of a single fax has dropped from \$2 each to \$0.20. Table 2 illustrates the savings made over one day, one week and one year if the organization sends an average of 50 faxes a day:

	Manual (Cost = \$2 per fax)	Network (Cost = \$0.20 per fax)	Savings
Day	\$100	\$10	\$90
Week	\$500	\$50	\$450
Year	\$26,000	\$2,600	\$23,400

*Table 2 – Costs incurred and savings made through integrated network faxing*

This gives Sarah additional time to devote to more productive tasks.

## **Production faxing**

Production faxing is similar, but very different to broadcast faxing. A broadcast fax is essentially sending the same message, say a sales brochure, to multiple recipients. With production faxing, you send a unique document to multiple recipients.

Production faxing is a key requirement for any company whose day-to-day operations consist of delivering large numbers of paper documents to customers and partners. Production faxing allows enterprises to deliver business critical documents - such as purchase orders, invoices, order confirmations, bills of lading, financial reports and mortgage tables, without the need to print, mail or manually fax a document both electronically and automatically.

# **GFI** Integrated network faxing key to improved productivity and information security

Mailing a document involves printing out the document, enclosing it into an envelope and mailing it out at a cost similar to manual faxing. If an organization's day-to-day operations involve sending out multiple documents per day, such as invoices, order confirmations and inventory ordering, then the cost per year can be a significant piece of a company's operational expenses. With production faxing, a company can reduce these costs by up to 90% by automating fax delivery and reducing costs to print, mail or fax a document.

## **Improved security**

With network integrated faxing, end users can send, receive, view, print and save faxes from their PC or laptop computer, eliminating the pile of paper around a communal fax machine.

Automatic inbound routing through a process called Direct Inward Dial (DID) routing, (in which end users are assigned a personal secure fax number) sends faxes directly to the user's desktop. Because the fax is received in the user's account, faxes are not left out in public view, and are not prone to being discarded or misrouted.

## **Other advantages**

In addition to the above, high performance integrated network faxing solutions have the following capabilities:

- 1 Incoming and outgoing fax queue sorting – i.e. you can view faxes by any of a number of variables, such as sender, status, destination, etc.
- 2 Improved fax quality, formatting capability and document legibility for a professional appearance
- 3 Ability to add attachments to the fax
- 4 Delivery to both email clients and standalone or network fax machines
- 5 Delivery to PDAs and mobile phones
- 6 Junk fax filters to eliminate unwanted documents
- 7 Fax broadcasting capabilities that allow you to send personalized fax messages to a large number of recipients
- 8 Archiving of faxes, thus eliminating the need to keep faxed copies of documents while still retaining key records
- 9 IT departments can consolidate fax server operations and standardize them
- 10 Integrated network faxing opens the possible use of real-time FAX over IP (FOIP).

## **Summary**

The simple and relatively painless process of setting up an integrated network faxing solution can significantly increase a company's efficiency and productivity. With a network faxing solution thousands of dollars can be saved in labor costs alone. In addition, faxes can be more secure, readily prepared and add an appearance of professionalism to the company's business communications. By leveraging existing technologies (such as word processing and messaging applications), other enterprises can derive greater benefit from existing applications with no additional cost in terms of software or additional training expenses.

# **GFI** Integrated network faxing key to improved productivity and information security

The integrated network faxing solution is one of the most elegant and beneficial on the market. The return on investment is high and the benefits of executing the solution can be realized literally in minutes.

## **About GFI FAXmaker for Exchange/SMTP**

GFI FAXmaker for Exchange/SMTP is a Windows-based network fax solution that offers email integrated faxing for Exchange Server and SMTP/POP3 server environments. Besides fax, GFI FAXmaker also offers send-and-receive SMS/text functionality. For Exchange Server users, GFI FAXmaker includes a native fax connector for Microsoft Exchange Server. For SMTP server users, GFI FAXmaker includes an SMTP fax gateway. Users can send and receive faxes and SMS messages (texting) directly from Microsoft Outlook, Outlook Web access or other email client, making GFI FAXmaker easy to use and learn. GFI FAXmaker includes a multi-line fax server, inbound fax routing, print to fax driver for Windows, support for server-side conversion of Office documents, and fax management features. For more info about this product and to download your free trial, please visit <http://www.gfi.com/faxmaker/>.

## **About GFI**

GFI is a leading software developer that provides a single source for network administrators to address their network security, content security and messaging needs. With award-winning technology, an aggressive pricing strategy and a strong focus on small-to-medium sized businesses, GFI is able to satisfy the need for business continuity and productivity encountered by organizations on a global scale. Founded in 1992, GFI has offices in Malta, London, Raleigh, Hong Kong, and Adelaide which support more than 200,000 installations worldwide. GFI is a channel-focused company with over 10,000 partners throughout the world. GFI is also a Microsoft Gold Certified Partner. More information about GFI can be found at <http://www.gfi.com>.



### **Sign up to GFI's FREE SMB-Zone Newsletter**

**Receive FREE invites to SMB focused content such as IT Advice, Topical White Papers, MVP Tips and Tricks, Webcasts and much more!**

© 2009 GFI Software. All rights reserved. The information contained in this document represents the current view of GFI on the issues discussed as of the date of publication. Because GFI must respond to changing market conditions, it should not be interpreted to be a commitment on the part of GFI, and GFI cannot guarantee the accuracy of any information presented after the date of publication. This White Paper is for informational purposes only. GFI MAKES NO WARRANTIES, EXPRESS OR IMPLIED, IN THIS DOCUMENT. GFI, GFI EndPointSecurity, GFI FAXmaker, GFI MailEssentials, GFI MailSecurity, GFI MailArchiver, GFI LANGuard, GFI Network Server Monitor, GFI WebMonitor and their product logos are either registered trademarks or trademarks of GFI Software Ltd. in the United States and/or other countries. All product or company names mentioned herein may be the trademarks of their respective owners.